

Boardwalk

Timber Dene

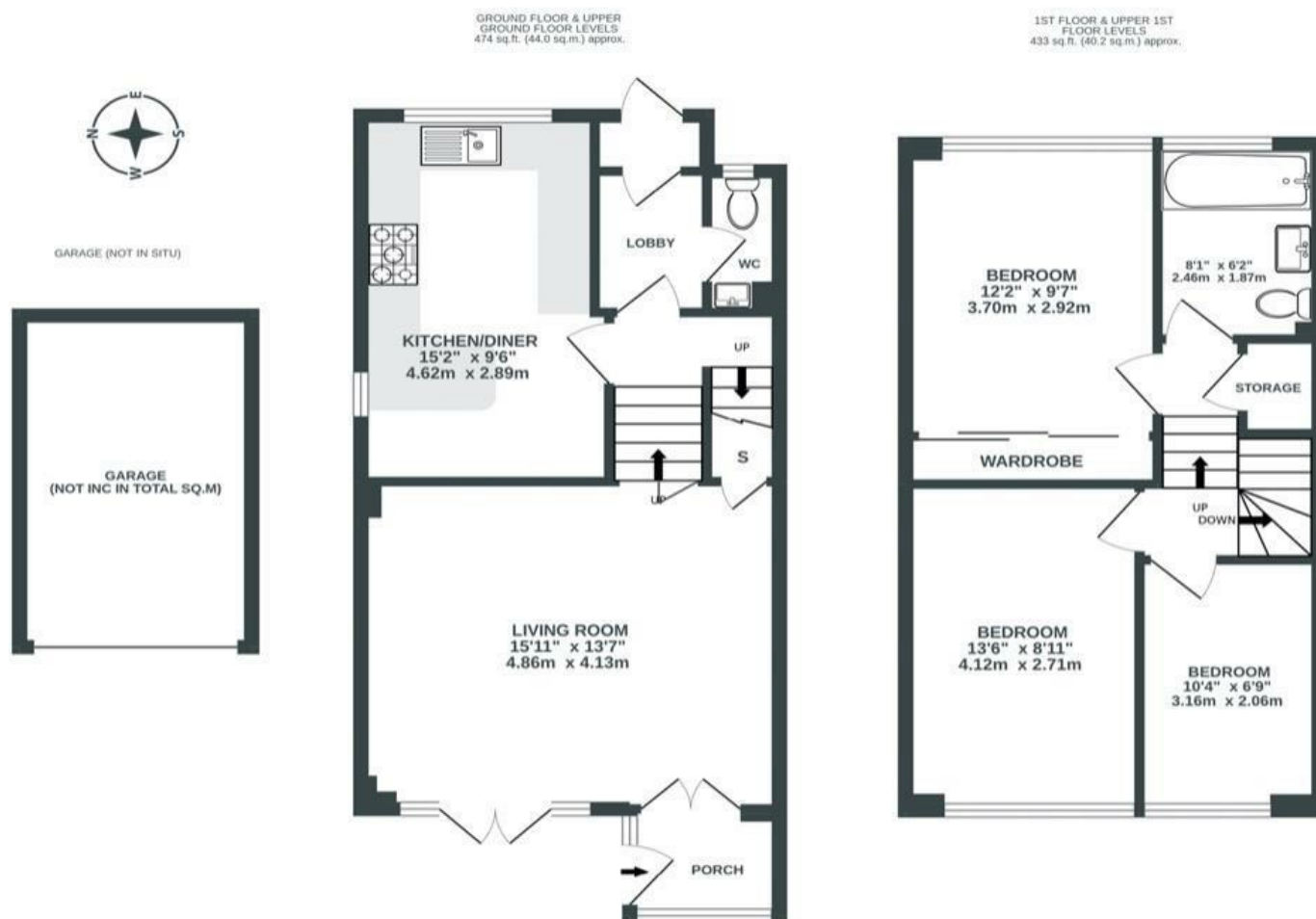
STAPLETON

APPROXIMATE FLOOR AREA
95.5 SQM / 1028 SQFT

BOOK A VIEWING

01179 898 222

hello@boardwalkpropertyco.com



Illustrations are for reference purposes only, measurements are approximate, not to scale.

Boardwalk

Timber Dene

, BRISTOL



£350,000



3 Bedrooms



Bristol, BS16

1TI



2 Bathrooms

"I moved to Bristol about 15 years ago for an apprenticeship in Engineering. I grew up in villages most my life, so being in Bristol, yet having that country feel has been great. I also wanted to find somewhere quiet with the potential to settle down for years to come with good schools nearby and space to go out and explore. The first bit that grabbed my attention with the house was having two gardens that catch the sun and the funky layout. It's been great living here, the neighbours are great, there is a small sense of community, but no-one forces anyone to be involved and the walks nearby are peaceful and varied. Every summer the doors are open, and you get a lovely breeze throughout the house, and you can have a barbeque on both sides! It's just been a great house, and I will definitely miss living here."

